

The POST Meeting will be held in Person and by Teleconference – The Public may access the meeting by coming to Town Hall or calling the number below and entering the Meeting ID when prompted.

Phone Number: 1 669 900 6833 Or 1 301 715 8592

Meeting ID: 870 7105 2932

Passcode: 434509



TOWN OF BASALT MEETINGS

Parks, Open Space and Trails Committee (POST)

Wednesday, February 16, 2022

At Town Hall and By Teleconference

Basalt Town Hall

101 Midland Avenue

-
- | | |
|----------------|---|
| 4:00 PM | 1. Call to Order |
| 4:05 | 2. Approve Minutes <ul style="list-style-type: none">▪ February 2, 2022 |
| 4:07 | 3. Discussion of Basalt River Park Phase 2 with Connect One Design <ul style="list-style-type: none">▪ Review Park Details and Provide Recommendations |
| 5:10 | 4. Updates on Projects |
| 5:20 | 5. POST Member Comments and Questions |
| 5:25 | 6. Adjourn |

Public Comment is limited to 3 minutes. Those who wish to speak should email james.lindt@basalt.net before the meeting starts with their name, phone number, and identify what item they would like to address. During the meeting those wishing to comment may also email planning@basalt.net, but it is not guaranteed that the email will be seen in a timely fashion.

POST Meeting Minutes

February 2, 2022

CALL TO ORDER

The POST Committee was called to order at 4:04 pm by Chair Jason Groves. Members present included Jason Groves, Paul Hilts, Carol Hawk, Julie Kolar, and Reid Haughey. The meeting was held electronically via Zoom Conferencing.

Staff present included Susan Philp, Planning Director; James Lindt, Assistant Planning Director; Catherine Christoff, Town Engineer.

Guests included Heather Henry of Connect One Design, Elise Wolf of Connect One Design, and Katie Tabor of Connect One Design.

AGENDA ITEMS

Approval of Minutes

M/S Carol and Paul to approve the minutes of December 8, 2021. Motion passed by a vote of 5 to 0.

Basalt River Park Phase II Bids

Catherine introduced that since the last POST meeting on December 8th, the play features and band shell were put out to bid. She summarized the remainder of the schedule which includes going out to bid for the general contractor to install the phase II work around March 1st with the bids to be returned around the end of March. Susan introduced Heather Henry, Elise Wolf and Katie Tabor from Connect One Design (C1D). Henry and Wolf went over the bids that were received on the Basalt River Park Phase II elements. Henry explained that Koolfog will integrate the misting features in the play features from whoever's features are selected. It was noted that there is a budget of \$25K for the slide, \$165K for the misting features, and \$350K for the bandshell. Henry continued that the proposals came in well under budget.

Henry and Wolf summarized Connect One Design's recommendations. C1D recommended selecting UPC to manufacture the slide as they seemed to have a better portfolio of installations than the other bidder and their price was comparable. Regarding the misting feature, there was only one bid received. It was presented that C1D is comfortable with the one bid as the company that provided the bid on the misting features is a reputable company that has completed many installations and they know how to keep the features safe for kids to play on

and Koolfog will integrate the misting system in the features. It was noted that the Koolfog estimate needs to be updated and C1D will work on getting an update.

Henry and Wolf summarized that there were 2 company's that bid on the bandshell/climbing wall. C1D felt that each of the proposals had its strengths and weaknesses. C1D came up with the concept of putting the two bidders together to take advantage of their strengths and the bidders are open to the concept of working together such that ID Sculptures would work on the climbing wall portion of the structure and Bryan May would work on the bandshell. Henry expressed that C1D would go back and work with the bidders on design and pricing for the combined effort and come back to POST if POST is accepting of the concept of combining their efforts.

Questions were asked about how they would separate out the tasks and Henry clarified that Bryan May would likely be the design/build on the bandshell and that ID Sculptures would likely work on the base of the structure that would include the climbing wall. Paul asked about the acoustics. Henry responded that they would have a design charrette on the bandshell and they would have representatives from TACAW consult with them on the acoustics. Susan noted that Staff and C1D had also engaged TACAW early on in the process to determine the best location for the bandshell.

Reid supports the concept of putting the bidders together as neither proposal was complete. He suggested that there needed to be thought in how performances would stage stuff with the climbing wall for stage performances and outdoor movies. Henry explained that ID Sculpture was looking at a single pillar climbing wall so that it will not have as much impact on the stage space. There was a request for POST members that would be interested in sitting in on the design charrette. Reid and Julie indicated that they would volunteer to sit in on the charrette.

Henry identified that they were hoping to get a thumbs up on the slide at this time and that they would bring more of the details back to POST on the bandshell/climbing wall and the misting play features. It was noted that the slide needs to have the bar at the top to force kids to sit down when going down the slide. POST discussed the need for the slide to be nestled in with the other elements and that there be a level of cohesion of the materials and colors but they do not need to match.

Discussion ensued about how the climbing wall can be incorporated into the bandshell structure without impacting the usefulness of the bandshell for stage performances and movies. It was also pointed out that there is need for the bandshell to have interior structure sufficient to support lighting/performance backdrops/movie screens. Henry noted that C1D will sit down with TACAW develop a strategy and criteria on the structure to support such performance elements.

Carol posed the question of whether they are trying to do too much with the element and an empty stage could be a good play structure in itself. Carol also asked about how the kids interact with the misting features. Henry responded that some of the mist will come out of the ground and some of it will come out of the features. It was also noted that the features will be on demand and push button activated.

Jason agreed that using both firms is a good concept. He said he agreed with Carol's point that we should ensure that the bandshell has a primary purpose of working for performances. Jason suggested that we let the bidders get together and see what they can come up with in integrating the bandshell and climbing wall.

Henry noted that the park master plan calls for an iconic piece in the bandshell and that it should have great value even when it is not being used for performances. She suggested that she appreciates POST's comments and that they are on the same page with regards to making the bandshell work well for performances.

Henry exited the meeting. Wolf presented the remainder of the construction documents for Phase II, including furnishing, signage, and lighting concepts. It was also explained that they are working on securing the Phase II plantings and that they are almost under contract for the plantings. Julie asked about the height of the lighting poles in the plaza area. Wolf responded that they would be between 10-12' tall as they do not require vehicles to go under them. Questions were raised about snow removal and Staff indicated that they would discuss it with Public Works.

In terms of lighting, POST members suggested going with intimate/muted lighting. Discussion ensued about the style of the lighting fixtures that should be pursued. It was suggested that C1D research the cost and viability of the wood supported fixtures. It was expressed that the features did not necessarily have to be wood supported, but should have a simple profile.

Wolf showed concepts for the furniture and posed the questions of whether all of the furniture pieces are must haves on day 1 or whether they can be phased in. Generally, it was decided that seating, dog stations/trash cans, and bike racks are all necessary at opening. It was suggested that the locations of the dog stations be revisited to remove them from around the sculpture/art piece and the main entrance to the plaza.

Julie also discussed the need for there to be a cohesion between the colors of furniture. She suggested using an individual color pallet of blues with more natural blues by the river and brighter blues closer to the plaza. Carol agreed with Julie.

Signs were also discussed. Julie thought that river rock with Corten steel makes sense but it can be overdone. It was identified that POST did not want plastic signage. It was concluded that POST members will review and come back at the February 16th meeting with comments on the theme and locations of signage.

Election of Chair and Vice Chair:

Susan noted that it was time for POST to consider election of a new chair and vice chair. Jason indicated that he would be willing to serve as chair again unless Carol wanted to do it. Carol expressed that she did not think she had time to be the chair and nominated Jason to continue as chair. M/S Paul and Reid for Jason to continue as chair and Carol to serve as vice chair. Motion passed by a vote of 5 to 0.

Project Updates

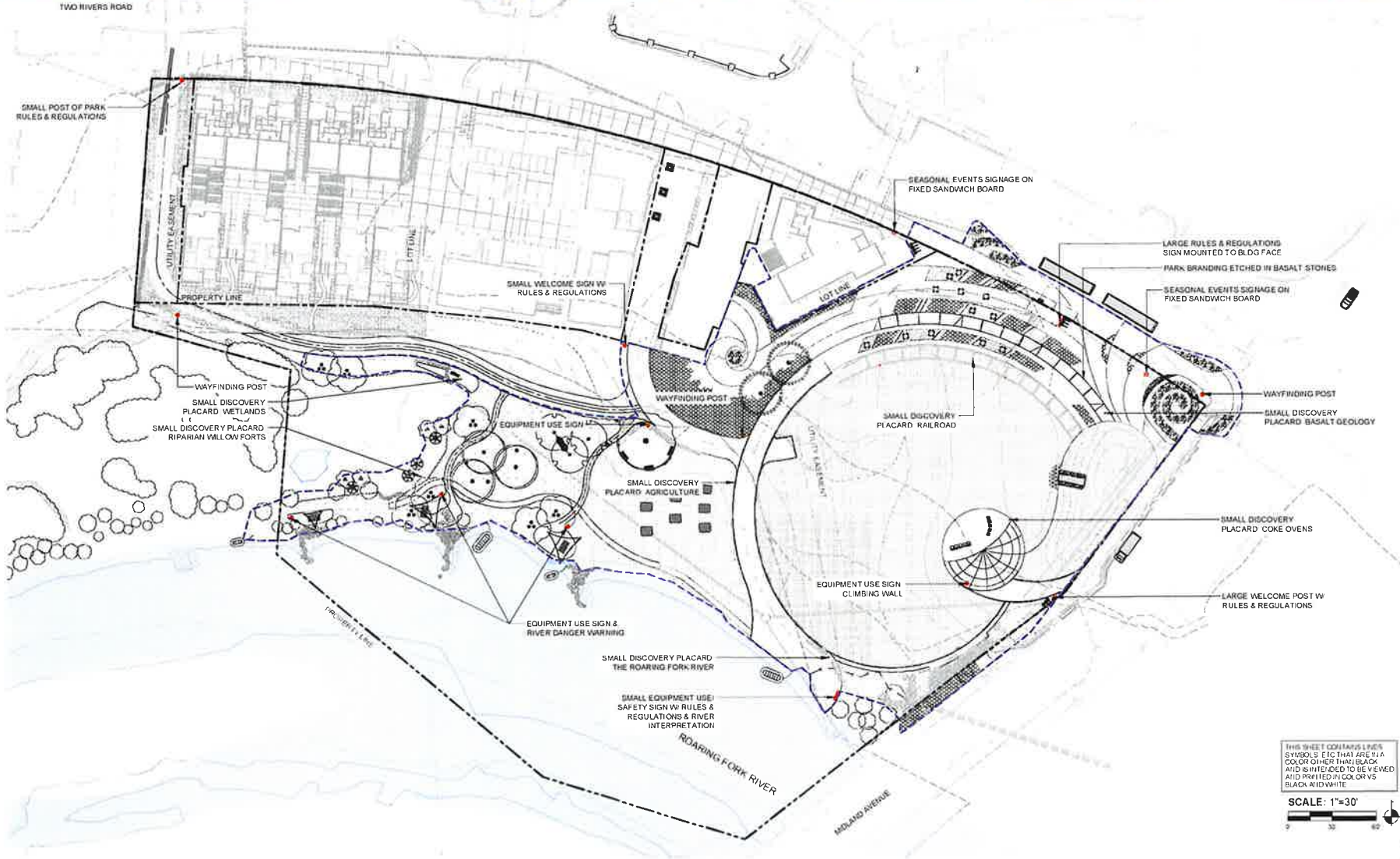
Ponderosa Trail- James explained that Lot J received their development review approval and is required to either extend the Ponderosa Trail or pay the Town to hire the contractor to do it by late summer.

Adjournment

M/S Carol and Paul to adjourn at 5:48 pm. Motion passed by a vote of 5 to 0.



TWO RIVERS ROAD



THIS SHEET CONTAINS LINES, SYMBOLS, ETC THAT ARE IN A COLOR OTHER THAN BLACK AND IS INTENDED TO BE VIEWED AND PRINTED IN COLOR VS BLACK AND WHITE

SCALE: 1"=30'



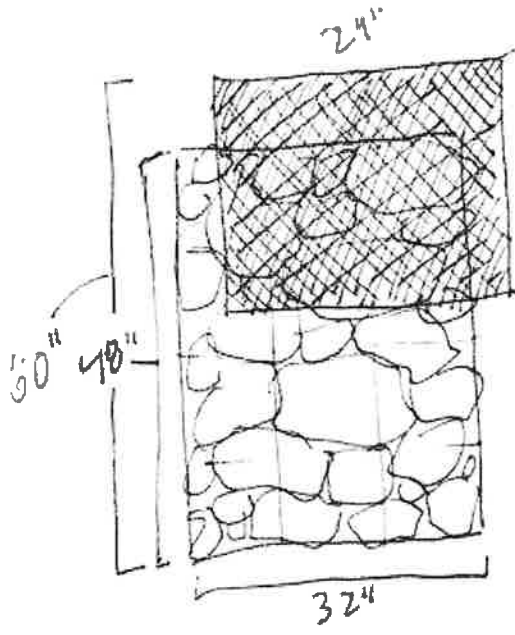
BASALT RIVER PARK
 PHASE 2 CONSTRUCTION
 BASALT, COLORADO 81621

Drawn By	Checked By
SWH/FCB/ET	SWH/FCB/ET

SIGNAGE PLAN
L.4.01

Handwritten notes:
 CAD Sign Concept presented at last post mtg

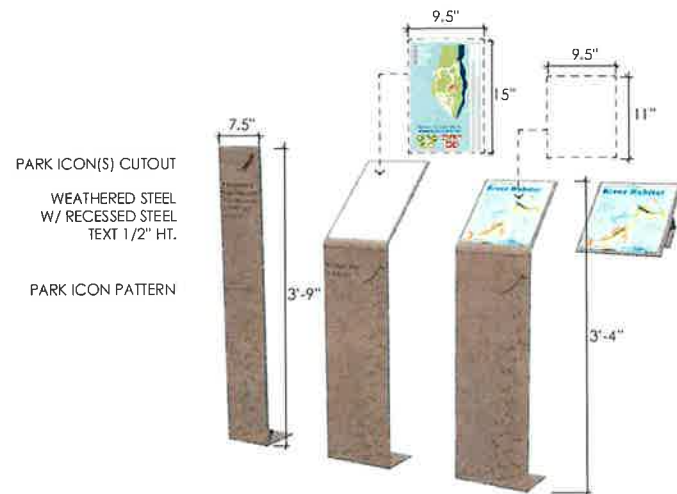
Adjusted Park Sign Design- More Economical Version Perviously Reviewed by POST



⊗ height based on average readability



01. PRIMARY MONUMENT



02. 04. WAYFINDING, TYP. 03. RULES/REGULATIONS, PARK MAP, WAYFINDING 05. 06. 07 INTERPRETIVE SIGN, TYP.

Sign Plan
 Designed by
 Terrain





LOW SLOPING PLANTING AREA TO FILL GAP BETWEEN WEATHERED STEEL AND STONE

WEATHERED STEEL SIGN PANEL W/ RECESSED STEEL TEXT
STONE RUBBLE WALL, TBD
PARK ICON, RECESSED IN STONE

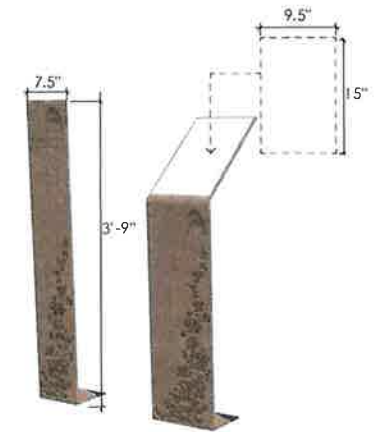
01. PRIMARY MONUMENT



PARK ICON
WAYFINDING TEXT

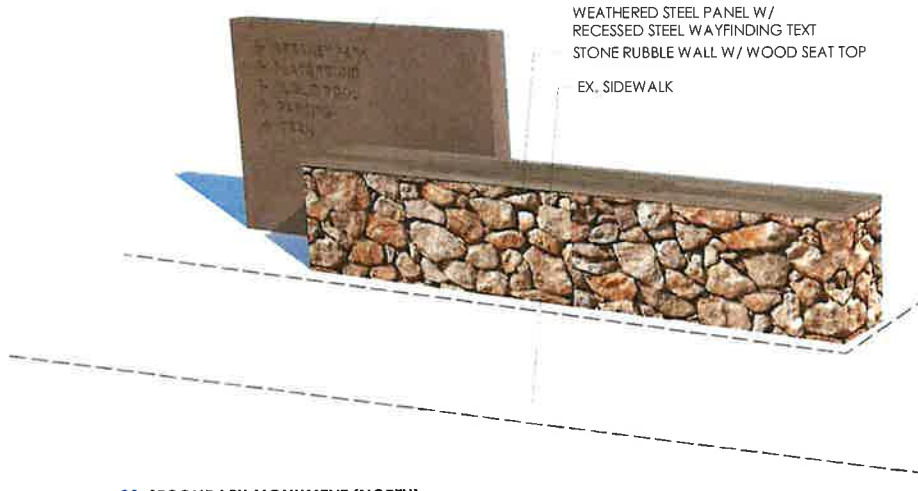
EX PAVED PATH EDGE
STONE 'CAIRN' BASE
STONE TBD

02. SECONDARY MONUMENT (SOUTH)



04. 05. 06. WAYFINDING

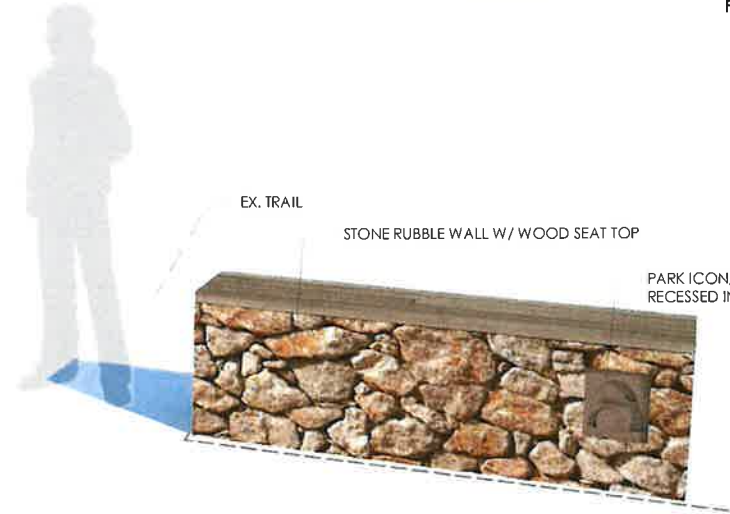
03. RULES AND REGULATIONS,
PARK MAP



WEATHERED STEEL PANEL W/
RECESSED STEEL WAYFINDING TEXT
STONE RUBBLE WALL W/ WOOD SEAT TOP

EX. SIDEWALK

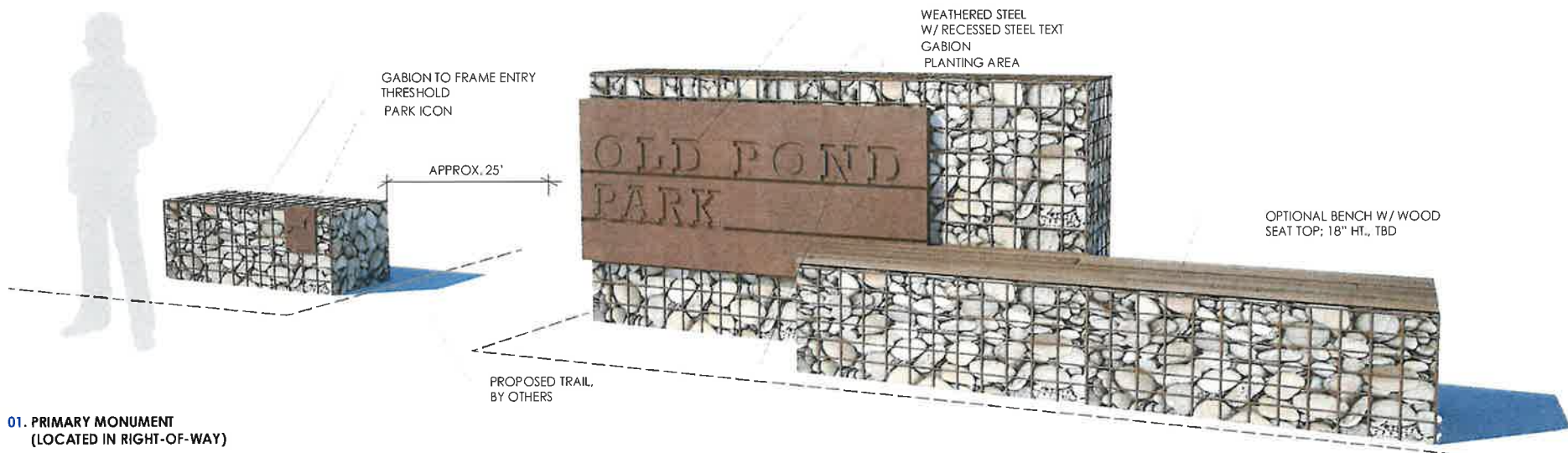
02. SECONDARY MONUMENT (NORTH)



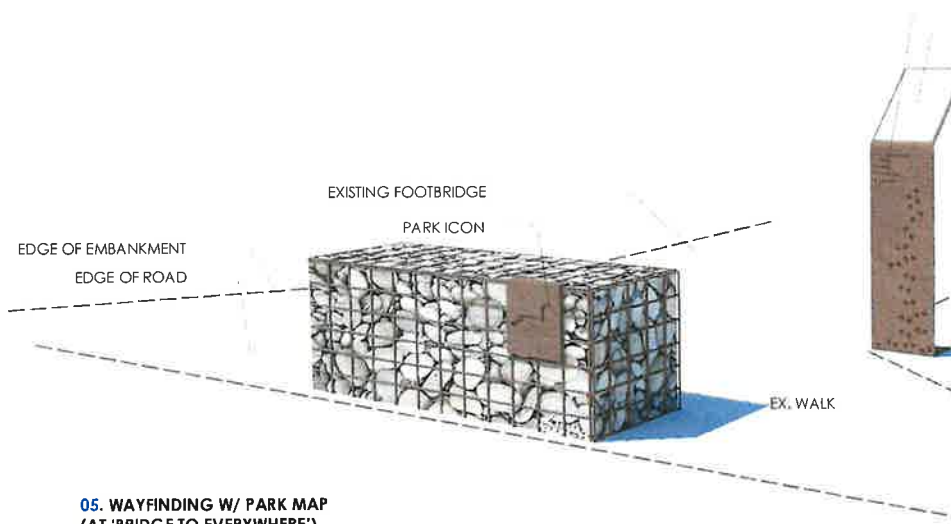
EX. TRAIL

STONE RUBBLE WALL W/ WOOD SEAT TOP

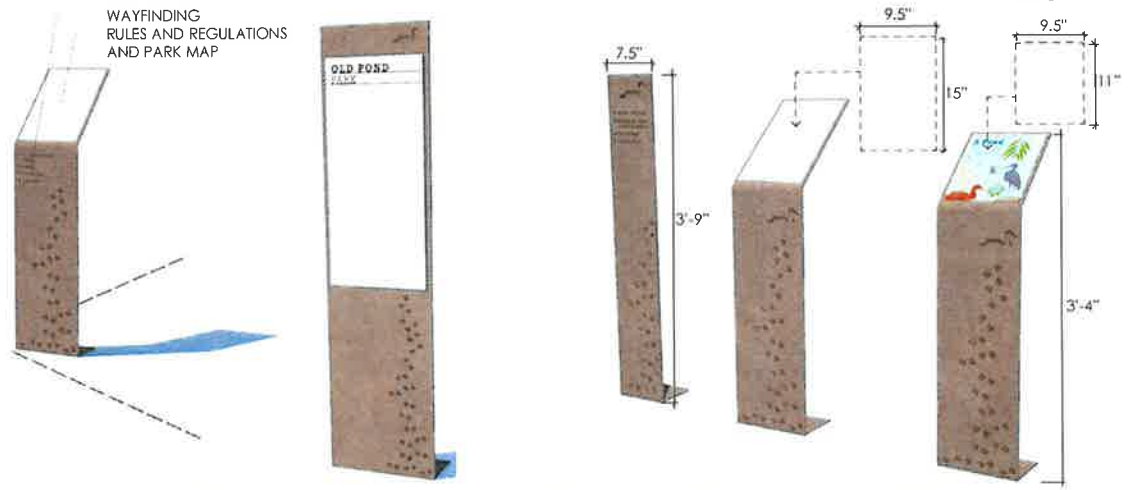
PARK ICON,
RECESSED IN STONE



01. PRIMARY MONUMENT
(LOCATED IN RIGHT-OF-WAY)



05. WAYFINDING W/ PARK MAP
(AT 'BRIDGE TO EVERYWHERE')



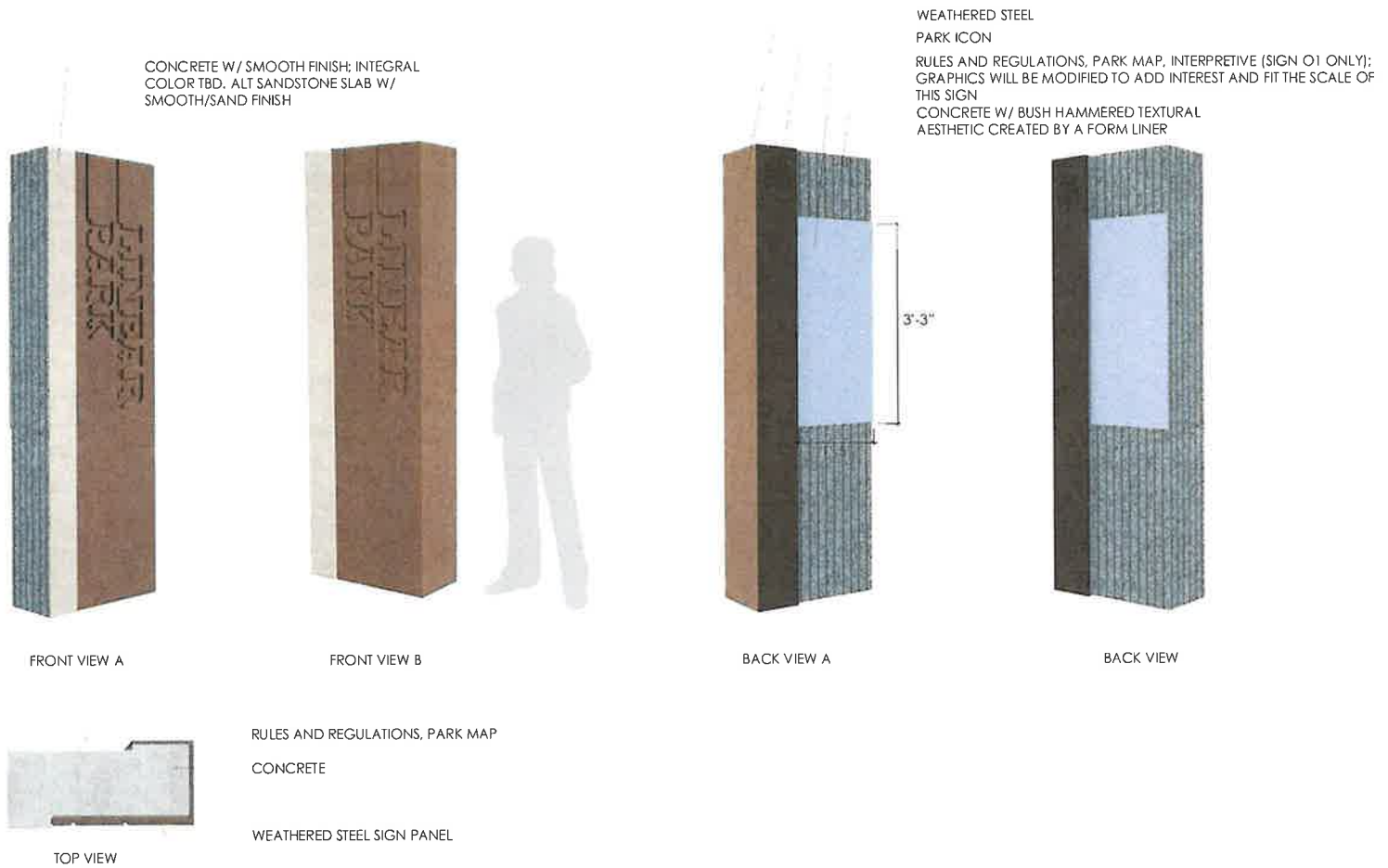
01. INTERIM PRIMARY MONUMENT OPTION
(LOCATED WITHIN 20' FIRE EASEMENT)

04. WAYFINDING SIGN

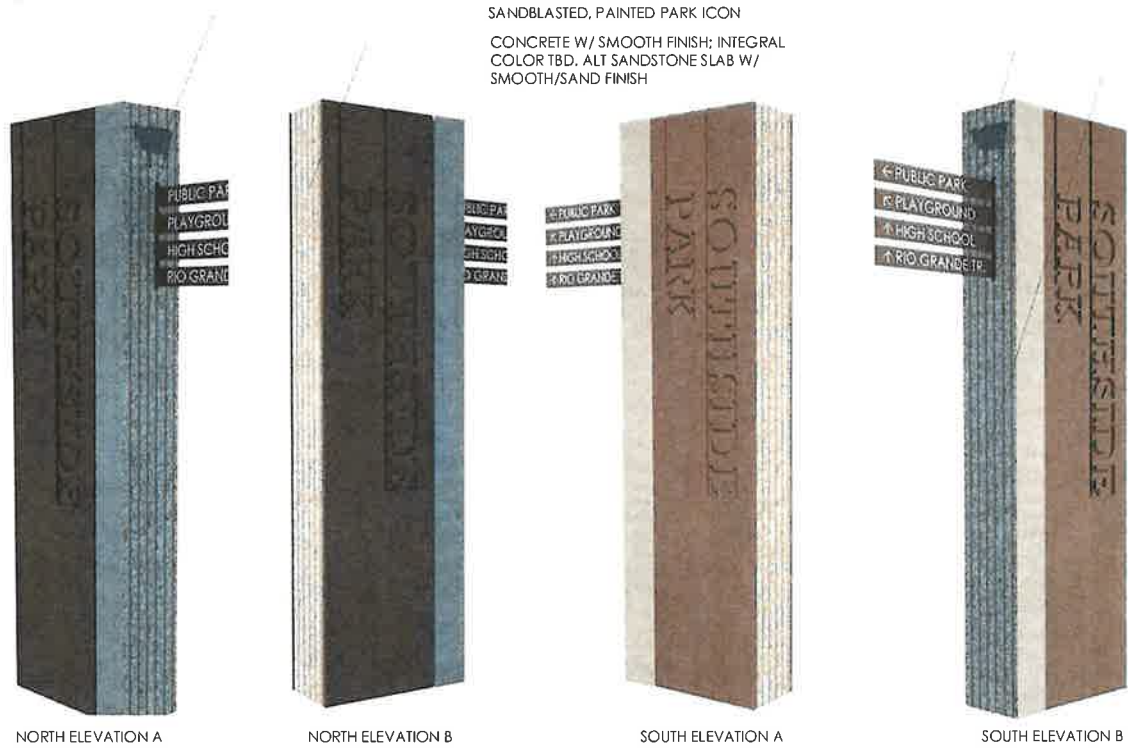
02. RULES/REGULATION AND PARK MAP

03. 06 . INTERPRETIVE SIGN





01. 02. PRIMARY MONUMENT W/ RULES AND REGULATIONS, INTERPRETIVE (01 ONLY)



TOP VIEW

CONCRETE

WEATHERED STEEL SIGN PANEL

01. PRIMARY MONUMENT

02. RULES AND REGULATIONS

